

Ferrybridge Multifuel 2 (FM2) Power Station



Statement of Community Consultation published in accordance with the Planning Act 2008 (Section 47(6))

Multifuel Energy Ltd (MEL), a 50:50 joint venture between SSE plc and Wheelabrator Technologies Inc., is proposing to develop a second Multifuel power station at Ferrybridge - known as Ferrybridge Multifuel 2 (FM2), next to the existing Ferrybridge Multifuel 1 (FM1) facility which is currently under construction. The power station will be capable of producing circa 70 megawatts (MW) net of low carbon electricity and heat, enough to supply around 160,000 homes*. The energy will be produced by burning waste derived fuel from various sources of processed municipal solid waste, commercial and industrial waste and waste wood.

We have prepared a Statement of Community Consultation (SoCC) that explains how the local community and local organisations will be consulted. As FM2 will generate over 50MW of energy it is a Nationally Significant Infrastructure Project and requires a Development Consent Order (DCO) under the Planning Act 2008 to allow it to be constructed.

The DCO application will be submitted to the Planning Inspectorate in spring/summer 2014 and will seek permission from the Secretary of State for Energy and Climate Change to develop our proposals.

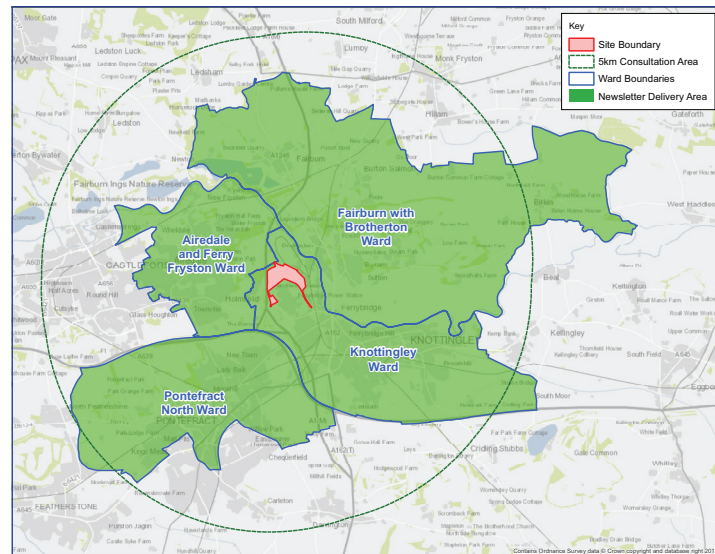
The consultation process

The consultation process is designed to raise awareness of the Proposed Development and provides the opportunity for the local communities that live in the vicinity of the site and may be affected, to be engaged with, and comment on the proposals.

This advertisement is formal notice of the publication of the SoCC for inspection and the start of the formal public consultation, which runs from **4 November to 20 December 2013**. During this time, we will be holding a series of public information events in the local area. You are invited to drop in at any time during the event sessions listed adjacently. You will be able to view our proposals, speak to members of the team and have

the opportunity to leave your comments via a feedback form. All feedback must be received by 5pm on Friday 20 December. The SoCC and other consultation documents are available for review from 4 November 2013 in hard copy at the public inspection locations (listed adjacently) or alternatively can be downloaded from our project website: www.multifuelenergy.com/fm2

* Based on the industry average annual consumption of 3,300 KWh of electricity and using a base load of circa 70MW net export capacity utilised for 8,000 hours per annum.



A map showing the 5 kilometre Consultation Area and newsletter delivery area

Public inspection locations

Locations	Opening Times
Pontefract Library Shoemarket, Pontefract WF8 1BD	Monday to Friday (closed on Thursdays): 09:30 - 19:00 Saturday: 09:00 - 16:00
Knottingley Library Knottingley Sports Centre, Hill Top, Pontefract Road, Knottingley, Pontefract WF11 8EE	Monday: 14:00 - 19:00 Tuesday, Wednesday & Friday: 09:00 - 19:00 Thursday: 09:00 - 13:00 Saturday: 09:00 - 13:30
Airedale Library and Learning Centre The Square, Airedale, Castleford WF10 3JJ	Monday & Wednesday: 09:00 - 19:30 Tuesday & Friday: 09:00 - 17:00 Thursday: 09:00 - 18:00 Saturday: 09:30 - 16:00 Sunday: 10:30 - 13:00
Castleford Library 2 Sagar Street, Castleford WF10 1AF	Monday, Tuesday, Wednesday & Friday: 09:00 - 17:30 Thursday: 09:00 - 19:00 Saturday: 09:00 - 15:00
Wakefield Council Offices Wakefield One, Burton Street, Wakefield WF1 2EB (for sat-navs WF1 2DD)	Monday to Friday: 08:30 - 17:00
Leeds Central Library Municipal Buildings, Calverley Street, Leeds LS1 3AB	Monday to Wednesday: 09:00 - 20:00 Thursday & Friday: 09:00 - 17:00 Saturday: 10:00 - 17:00 Sunday: 13:00 - 17:00
Selby Library 52 Micklegate, Selby YO8 4EQ	Monday: 09:30 - 19:30 Tuesday, Wednesday & Friday: 09:30 - 17:30 Thursday & Saturday: 09:30 - 12:30

Public information events

Venue	Date	Time
Ferrybridge Cricket Pavilion Ferrybridge Power Station, Stranglands Lane, Knottingley WF11 8RA	Wednesday 6 November	14:00 - 20:00
Monk Fryston Hall Hotel Monk Fryston, North Yorkshire LS25 5DU	Thursday 7 November	14:00 - 20:00
Ferrybridge Community Centre The Square, Ferrybridge, Knottingley WF11 8PQ	Friday 8 November	14:00 - 20:00
Pontefract Town Hall Bridge Street, Pontefract WF8 1PG	Saturday 9 November	10:00 - 14:00
Airedale Library The Square, Airedale, Castleford WF11 3JJ	Monday 11 November	14:00 - 19:00
Brotherton Parish Hall Tadcaster Road, Brotherton, Knottingley WF11 9HJ	Tuesday 12 November	13:30 - 18:30
Ferrybridge Cricket Pavilion Ferrybridge Power Station, Stranglands Lane, Knottingley WF11 8RA	Wednesday 13 November	14:00 - 20:00

* Dates and times of events have been chosen subject to venue availability.

Contact us

Website: www.multifuelenergy.com/fm2
Email: fm2@multifuelenergy.com
Phone: 01977 884 314

Post: Ferrybridge Multifuel 2 Consultation
Multifuel Energy Ltd
Ferrybridge 'C' Power Station
Stranglands Lane, Knottingley WF11 8SQ